

HIGH-POWER Switchgear Division
BERG Product Range

- Large isolation air and creepage path
- Self-cleaning blade contacts
- True opening and visible distance
- Rugged anti-torsion construction
- Large customisation with :
 - Manual, motor, pneumatic drives
 - Auxiliary switches, blocking magnets
- According to IEC 60 129
- Dimensions Fitting

LOW VOLTAGE DISCONNECTORS

HA Range
1 500V Traction Network
100 A to 3,15 kA
Number of poles : 1, 2, 3, ...



Electrical Characteristics

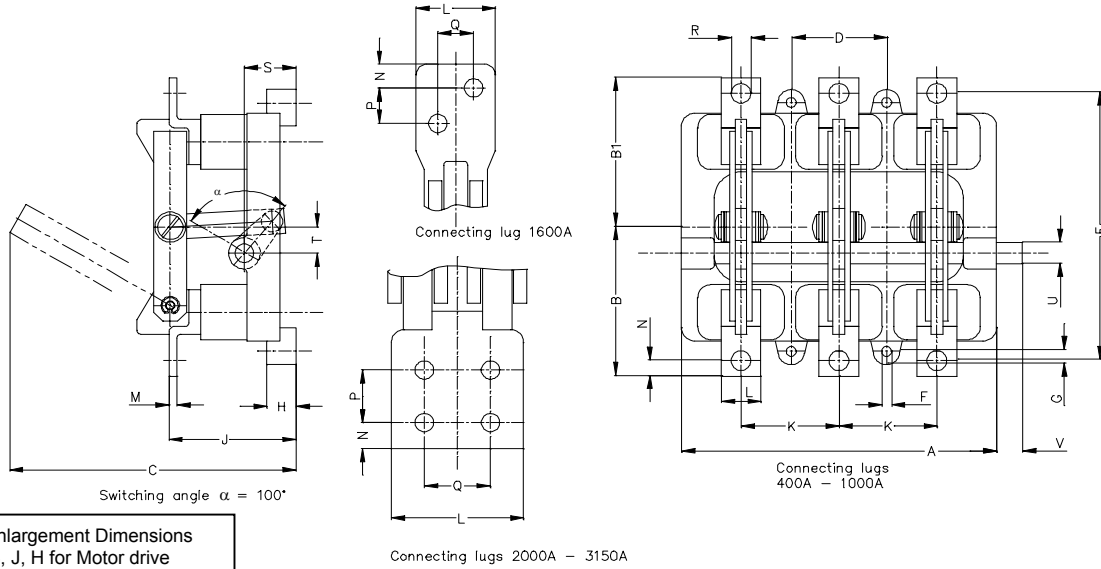
Rated thermal current	AC	100A	200A	400A	630A	1,0kA	1,6kA	2,0kA	3,15kA
	DC	100A	200A	400A	630A	1,25kA	1,9kA	2,4kA	3,75kA
RMS 1 sec short-time withstand current		22kA		40kA		49kA	52kA	57kA	67kA
Rated peak current		55kA		100kA		123kA	130kA	143kA	168kA

Nominal Traction Network Voltage	1,5 kV
Dielectric withstand Voltage 1 min/50Hz	6,5 kV
Rated impulse withstand voltage BIL	12 kV

- **No-load operation**
- **Indoor type – only vertical mounting**
- Mechanical endurance: ≤ 1kA = 25 000 cycles; >1kA = 50 000 cycles (open / close)
- Maximum temperature withstand at 130° C without damages to the switch
- Electrical contact by contact knives with pressed on hard silver contact rivets and silver-plated electrolytic copper plates
- Small making / breaking capacity
- Supporting insulators made of cast epoxy resin (fire classification according to UL94-V1)

Main Dimensions

HA 100A – 3 150A



** Enlargement Dimensions
C, J, H for Motor drive

		Dimensions in mm																							
Amp	No of poles	A	B	B ₁	C ^(**)	D	E	F∅	G	H ^(**)	J ^(**)	K	L	M	N	P	Q	R	S	T	U∅	V	**	Drive	
400	1	90	117	115	203	70	190	9	10	25	84		30	6	15			11	28	20	15	40		1A	
630			127	125																					
1 000		105	139	139	230	75	230							40	10	20					22	18	50		1B
1 600														192	192										
2 000		150	215	215	294	120	280	14		15	30	118		60	12	18	27	27	14	55	29	25	80		1B
3 150	80													18	20	40	40								
100	2	130	101	99	185	70		9	10	25	83	70	25	4	12,5			9,5	39	23	12	40		1A	
200																									
400		175	117	115	215	85					22	96	85	30	6	15			11,5	40	20	15			1A
630														127	125										
1 000		270	139	139	235	245			15	30	103	120	120	40	10	20			14	33	22	18	50		1B
1 600														300	192	192									
2 000	330	215	215	296	296		14	32,5	32	132	150	80	60	12	18	27	27	14	57	29	25	70		2	
3 150													394				354								
100	3	180	101	99	185	60		9	10	25	83	60	25	4	12,5			9,5	39	23	12	40		1A	
200													70												
400		240	117	115	215	75					22	96	75	30	6	15			11	40	20	15			1A
630														127	125										
1 000		360	139	139	235	120			15	30	103	120	120	40	10	20			14	33	22	18	50		1B
1 600														420	192	192									
2 000	480	215	215	296	446		14	32,5	32	132	150	80	60	12	18	27	27	14	57	29	25	70		2	
3 150													574				534								

With its engineering capability in Mannheim (Germany), in Saint-Loup-de-Naud (France), and its testing platforms in Saint-Bonnet-de-Mure (France), Newburyport (USA) , Ferraz Shawmut has it all for defining and offering customized solutions to meet your most specific requirements :

- . Adapted drives or control units. - Adapted technical performances

For Driving types, please refer to our technical data sheet reference S601558A

For Signalisations, please refer to our technical data sheet reference T601559A

Publication : 10/08/2000
R601557A

FERRAZ SHAWMUT, INC.
Mountain Lakes, NJ
Tel: (973) 257-9965,
Fax: (973) 257-9932

FERRAZ SHAWMUT - FOUILLERET
Saint-Loup de Naud
77650 LONGUEVILLE – FRANCE
N° Identification CEE : FR 429 555 11 217A

FERRAZ SHAWMUT - BERG
Käfertaler Strasse 226-228
68167 MANNHEIM – GERMANY
Ust-IdNr. DE 143841589A