

# Data Sheet

# AtLok AS-i



amGard safety gate switch solutions consist of a range of 'Control interlocks'. The control interlocks are split into gate switches (Stops) and solenoid interlocks (Loks). Combining tamper proof locking mechanisms and dual channel safety circuitry amGard is suitable for category 4 applications.

## description:

atlok AS-i is a heavy duty solenoid controlled, tongue switch, designed for direct connection onto an 'AS-i Safety at Work' installation. Fitted with a standard M12 quick connect fitting. The heavy duty tongue and head can rotate in 90° increments, and allows for a +/- 12 mm misalignment. It features a key operated auxiliary release (in the event of a power failure) and LED status indicators.

Suitable for both sliding and hinged doors, this product is ideally designed for machines with run down cycles where quick and frequent access to equipment it required.

**operation** - when the machinery is in operation the tongue is trapped in the AtLok AS-i unit with the access door securely closed. An integral solenoid prevents the tongue from being released. To open the guard door an operator must first select stop on the machine control panel. Only when the machine has completed its run down cycle should the solenoid be energised, via the AS-i control with AUX supply. At this point, the 'solenoid circuit healthy' LED will extinguish on the unit indicating that the tongue actuator can be released. When the tongue is removed, the 'door circuit healthy' LED will be extinguished.



## Options

Safety Key Adaptor



Internal Release



Padlock Adaptor



Lockout Device



# Data Sheet

# AtLok AS-i

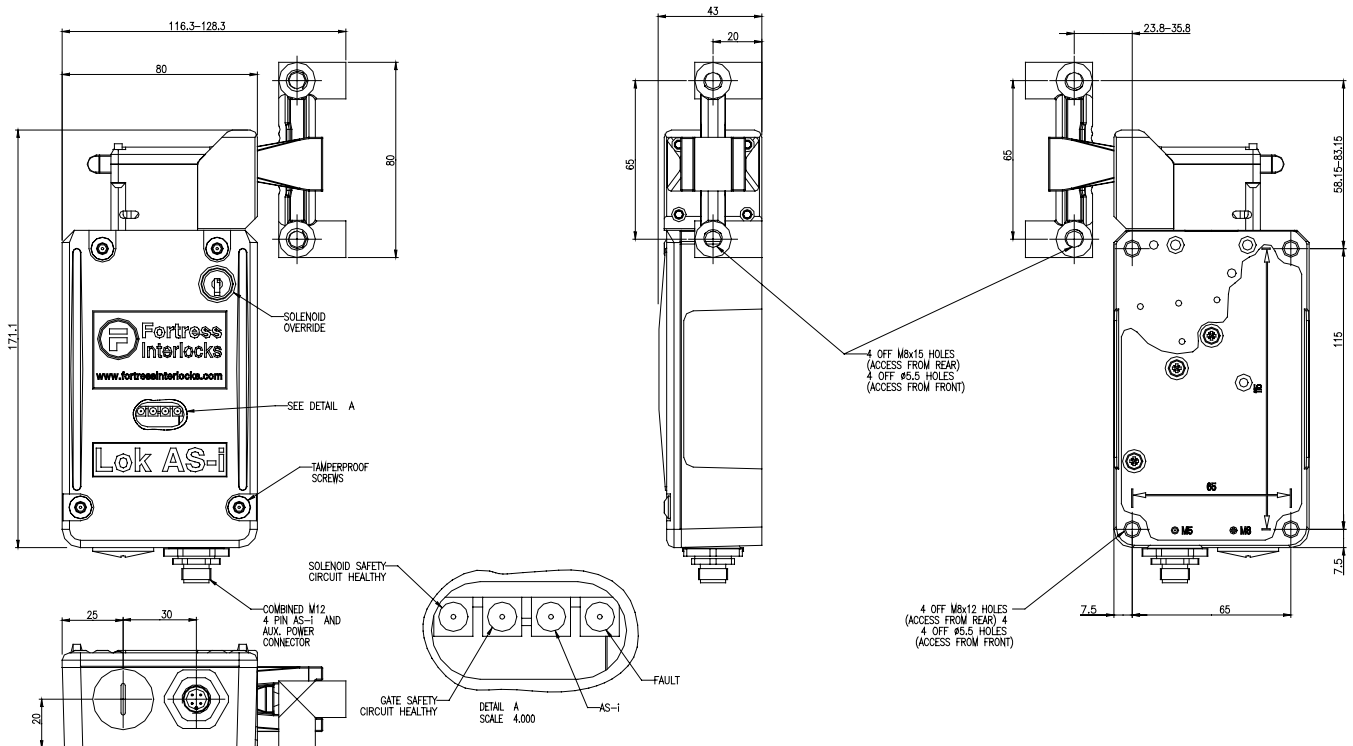


## Technical Specification

Housing Materials	Zinc Alloy to BS EN 12844/ Stainless Steel to BS3146
Paint Finish	Gloss Polyester Powder Coat on Passivated Base Material
Colour	Red & Black & Stainless Steel
Ingress Protection	IP67 (DIN 400050)
Am Handle Operating Force	0.5Nm
Auto Head Retention Forced Locked	10KN
Maximum Approach Speed	20m/minute
Mechanical Life	>1,000,000 Switching Cycles

## Technical Specification

Maximum frequency of operation	7,200/hour
Ambient temperature	-5°C to 40°C (Mean Over 24 Hours = +35°C)
Connector Type	M12 Male
Switching Principal	Positive Break
Contact Material	90% Silver and 10% Nickel
Solenoid Power Rating	12W
(Solenoid current at Nominal 24V DC)	(500mA)
Solenoid Rating (Duty Cycle)	100%



[www.fortressinterlocks.com](http://www.fortressinterlocks.com)