

Data Sheet

DM & DMS



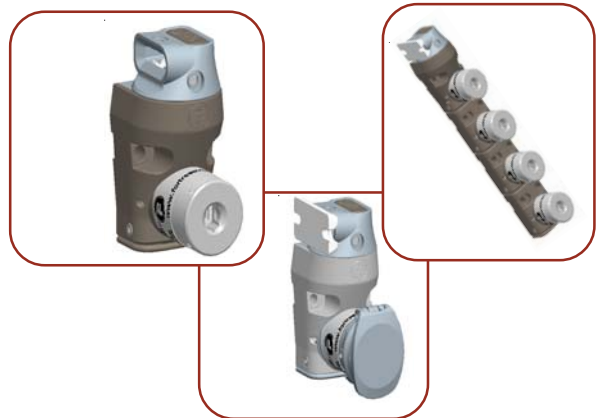
mGard is the ultimate range of robust **mechanical trapped key products**. Trapped key technology offers purely mechanical access locks (removing the need for expensive wiring). mGard offers an extensive variety of modular interlocking solutions.

description:

the DM and DMS (full stainless steel version) are robust, modular access interlocks suitable for use on all types of doors. They are sold as a single or multiple door interlock with up to ten lock modules. As part of an interlock system the locks are used to control access to enclosed areas until a safe condition has been achieved.

operation (example sequence on DM1)

the key is inserted into the lock and turned; the actuator is disengaged and the door opened. The key remains trapped until the door is closed and the actuator re-engaged. Other sequences are available.



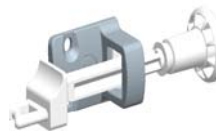
options:



fixed actuator (F)



self aligning actuator (S)



hand operated actuator (H)



compressible actuator (C)

lock portion



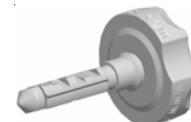
CL(S)



ML(S)



spring loaded dustcover



low profile CL key

www.fortressinterlocks.com



Technical Data

DM & DMS



Construction

Construction DM

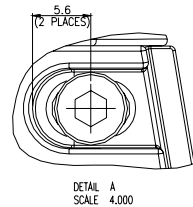
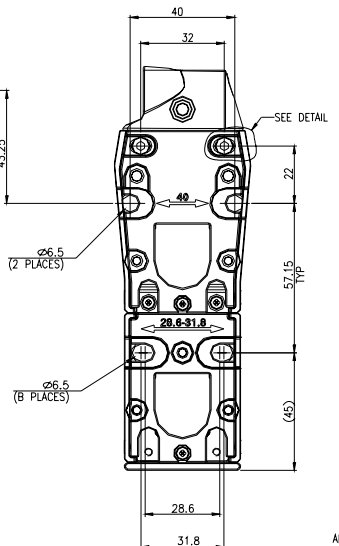
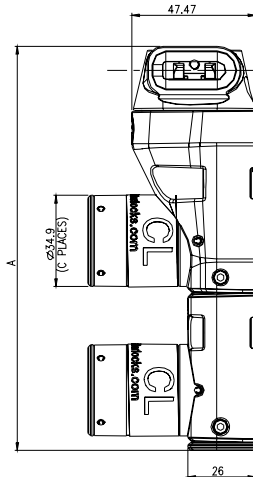
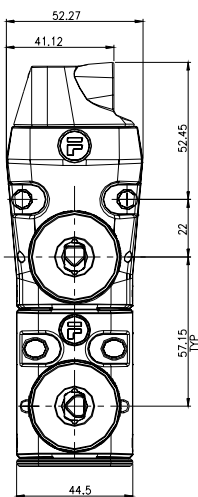
- Body Housing: Die-cast zinc body with pearl bronze finish
- Head: All stainless steel.
- Internals: All stainless steel contact components
- Actuators: All stainless steel
- Lock Mechanism: CL or ML lock types are of die-cast zinc body with stainless operating mechanism
- Key: Stainless Steel

Construction DMS

- Body Housing: All stainless steel
- Head: All stainless steel
- Internals: All stainless steel contact components
- Actuators: All stainless steel
- Lock Mechanism: CLS or MLS lock types are of all stainless steel.
- Key: All Stainless Steel

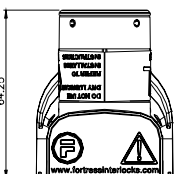
Features & Benefits

- No product handling issues
- 8 head configurations with +/- 5° of fine adjustment
- Horizontal and vertical mounting
- Tested to over 1,000,000 operations
- Durable plated bodies
- Tamper resistant head mechanism
- Patented sequencing system
- Sequential / Non-sequential key operation
- Extend or trim-down units and use surplus modules elsewhere
- Minimal maintenance



PRODUCT	A OVERALL LENGTH	B NO OF SLOTTED HOLES	C NO OF CL LOCKS
DM1	97.45	0	1
DM2	154.6	2	2
DM3	211.75	4	3
DM4	268.9	6	4
DM5	326.05	8	5
DM6	383.2	10	6
DM7	440.35	12	7
DM8	497.5	14	8
DM9	554.65	16	9
DM10	611.8	18	10

ALL DIMENSIONS ARE NOMINAL AND ARE SUBJECT TO MANUFACTURING TOLERANCES



PRODUCT	A OVERALL LENGTH	B NO OF SLOTTED HOLES	C NO OF CLS LOCKS
DMS1	97.45	0	1
DMS2	154.6	2	2
DMS3	211.75	4	3
DMS4	268.9	6	4
DMS5	326.05	8	5

DM Tabulated Drawing

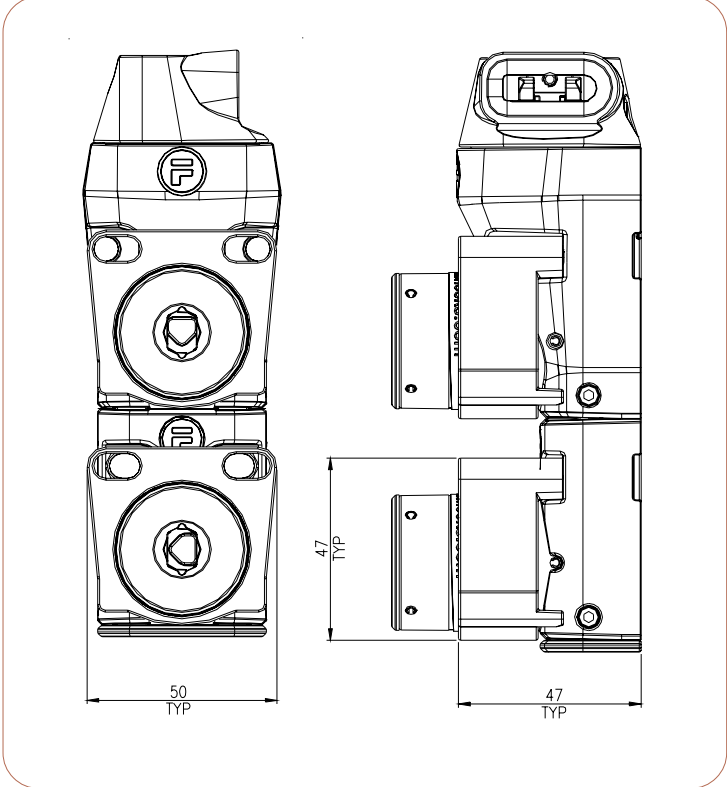
Technical Data

DM & DMS



Back of Board Mounting kit shown in operation on a **DM1** and illustrated on its own.

1. Provides a flat mounting surface for back of board panel mounting.
2. Easy conversion from the front of board surface mounting.
3. Uses **DM** fixing centres.



Head Positions

The **DM** and **DMS** modules benefit from a revolutionary new patented head design. With 3 actuators to choose from, the head features a choice of 4 head rotation angles and 2 actuator entry points.



Front Side Entry



Left Top Entry



Rear Top Entry



Right Side Entry